



East Down Yacht Club Impala European Championship & Sonata Open Event - 25th/26th May 2024

SAILING INSTRUCTIONS

The notation [DP] in a rule in the NoR means that the penalty for a breach of that rule may, at the discretion of the Protest Committee, be less than disqualification. The notation (NP) in a rule means that a boat may not protest another boat for breaking that rule. This changes RRS 60.1(a)

1. RULES.

- 1.1. The event is governed by the rules as defined in The Racing Rules of Sailing (2021-2024).
- 1.2. The prescriptions of the Royal Yachting Association (RYA) shall apply.

2. CHANGES TO SAILING INSTRUCTIONS.

2.1. Any change to the sailing instructions will be posted before 0900 on the day it will take effect, except that any change to the schedule of races will be posted by 2000 on the day before it will take effect.

3. COMMUNICATIONS WITH COMPETITORS.

- 3.1. Notices to competitors will be posted on the official notice board located on the ground floor of the EDYC clubhouse.
- 3.2. On the water, the race committee intends to monitor and communicate with competitors on VHF radio channel 37.
- 3.3. The following communications may be made by the race committee on VHF channel 37: time checks, courses, change of courses, shortening, postponement, abandonment or recalls.
- 3.4. While racing, except in an emergency, a boat shall not make voice or data transmissions and shall not receive voice or data communication that is not available to all boats.
- 3.5. Using the Helmsman's mobile contact number supplied on the Entry Form, a WhatsApp Group will be created to allow the Event Management Team to communicate with competitors. This Group will only exist for the duration of the event.

4. CODE OF CONDUCT.

- 4.1. Competitors and support persons shall comply with reasonable requests from race officials.

5. SIGNALS MADE ASHORE.

5.1. Signals made ashore will be displayed at the flagpole at the front of the EDYC clubhouse.

5.2. When flag AP is displayed ashore, '1 minute' is replaced with 'not less than 30 minutes' in Race Signals AP.

6. SCHEDULE OF RACES.

6.1. Dates of racing will be Saturday 25th and Sunday 26th May 2024.

6.2. Three races will be sailed on Saturday and two on Sunday.

6.3 The scheduled time of the warning signal for Impalas is 1055.

6.4 The warning signal for Sonatas will be made as soon as practical after the starting signal for Impalas.

6.5 Subsequent races each day will follow as soon as is practical after all yachts have completed the previous race.

7. CLASS FLAGS.

7.1. The class flag for Impalas will be international code flag Numeral 7.

7.2. The class flag for Sonatas will be international code flag E (Echo).

8. RACING AREA.

8.1. The preferred race area is to the south of Long Rock and, depending on wind direction, to the south of Barrel Rock

8.2. The chartlet (not suitable for navigation) at Annex B shows the general location of these areas together with the approximate location EDYC race marks

8.3. If wind and tide combine to make adverse sailing conditions the race area may move to an area north of Limestone Rocks

9. COURSES.

9.1. There shall be three windward – leeward races on Saturday all as shown in Annex A.

9.2. A black number on a white background will indicate the course to be sailed namely, 1 to indicate course LA1, 2 to indicate LA2 and 3 to indicate LA3.

9.3. On the Sunday there shall be one windward - leeward race as Saturday followed by a longer round-the-cans race using the EDYC's race marks.

Note: Second Race on Sunday.

9.4. The start line for the second Sunday race will be the same line used for the first race that day with the first mark being approximately too windward and the Finish Line will be at the EDYC Signal Vessel in Holm Bay.

9.5. The Committee Boat will display mark boards giving the course to be sailed using the EDYC's race marks as shown in Annex B and being read from left to right; red numbers on a white background shall be left to port; green numbers on a white background shall be left to starboard.

9.6. The number of laps of the course to be sailed will be indicated by a black number on a white background to the left of the course shown, if no number is shown then the course is to be one lap.

9.7. The Finish shall be stern mast of the EDYC Signal Vessel and Mark E.

9.8. At the end of each lap of the course a boat shall pass between the stern mast of the EDYC Signal Vessel and mark E.

9.9. All boats shall pass North of Marks K and R, and to the seaward side of marks 2 and 6 unless these are marks of the course.

10. MARKS.

10.1. Annex B shows the approximate location of EDYC racing marks.

10.2. Laid marks will be large yellow inflatable buoys. Mark 1a will be a smaller orange buoy.

10.3. EDYC race marks are orange barrels and are painted with their identification number or letter.

10.4. The Race Officer Boat is a white Bermudan sloop yacht called Nik Nak.

10.5. The EDYC Signal Vessel is white with a cabin and two masts located in Holm Bay. It is moored to the East of the East Down YC moorings.

11. THE START.

11.1. Races will start by using RRS 26.

11.2. For windward – leeward courses the starting line is between the mast of the Race Officer Boat (Nik Nak, white hull) and mark S.

11.3. The same start line will be used for the round-the-cans race.

11.4. (DP) Boats whose warning signal has not been made shall avoid the starting area during the starting sequence for other races.

11.5. If any part of a boat's hull is on the course side of the starting line at her starting signal and she is identified, the race committee will attempt to broadcast her sail number on VHF channel 37. Failure to make a broadcast or to time it accurately will not be grounds for a request for redress. This changes RRS 62.1(a).

11.6. A boat that does not start within 10 minutes after her starting signal will be scored Did Not Start without a hearing. This changes RRS A5.1 and A5.2.

12. THE FINISH.

12.1. For windward-leeward races, the Finish Line is between the mast of the committee boat (Nik Nak, white hull) and Mark S.

12.2. For the round-the-cans race, the finish line shall be between the stern mast of the EDYC Signal Vessel and Mark E located in Holm Bay.

13. TIME LIMITS AND TARGET TIMES.

13.1. The target time for the windward/leeward races shall be 1 hour and for the round-the-cans race the target time shall be two hours. This changes RRS 62.1(a).

13.2. The race time limit shall be 1600.

14. HEARING REQUESTS.

14.1. For each class, the protest time limit is 60 minutes after the last boat in that class finishes the last race of the day or the race committee signals no more racing today, whichever is later. The time

will be posted on the official notice board.

14.2. Hearing request forms are available from the race office in the McRobert Room on the ground floor of the EDYC clubhouse or for download from.

14.3. Notices will be posted no later than 30 minutes after the protest time limit to inform competitors of hearings in which they are parties or named as witnesses. Hearings will be held in the McRobert room, located on the ground floor of the EDYC clubhouse, beginning at the time posted.

15. SCORING.

15.1. A yacht's finishing position is her race score.

15.2. A boat's series score is the total of her race scores.

15.3. If 5 races are sailed then one discard will be allowed. If 4 or fewer races are sailed, then all will count towards the series score.

15.4. If there is a Series tie Rule A8 shall apply.

15.5. Four races are required to be completed to constitute a series

16. SAFETY REGULATIONS.

16.1. (DP) Personal buoyancy aids must be always worn by people in dinghies, tenders, ferries, safety boats and support vessels.

16.2. (DP) A 5-knot speed limit (speed over the ground) is imposed in the immediate area of the clubhouse waters bounded to the North by Dodd's Island and in the South by the entrance to the Dorn, often marked by perches.

16.3. (DP) A boat that retires from a race shall notify the race committee at the first reasonable opportunity.

17. REPLACEMENT OF CREW OR EQUIPMENT.

17.1. Substitution of competitors is allowed. Substitution of damaged or lost equipment is allowed.

18. EQUIPMENT AND MEASUREMENT CHECKS.

18.1. The event organisers will appoint a Scrutineer who may inspect any boat if there is reason to suspect a significant inconsistency with the Class Association Rules, the Notice of Race or the Sailing Instructions.

19. PRIZES.

19.1. Prizes may be given in each class for the winners of each race. If a yacht has already won a prize, then the next prize will be awarded to the next finisher.

19.2. Prizes for the first day will be awarded ashore at EDYC after racing for the day has finished.

19.3. Prizes for the second day and overall Series prizes will be awarded ashore at EDYC after racing for the day has finished.

20. RISK STATEMENT.

20.1. Rule 3 of the Racing Rules of Sailing states: 'The responsibility for a boat's decision to participate in a race or to continue racing is hers alone.' Sailing is by its nature an unpredictable sport and therefore inherently involves an element of risk. By taking part in the event, each competitor agrees and acknowledges that:

- a. They are aware of the inherent element of risk involved in the sport and accept responsibility for the exposure of themselves, their crew and their boat to such inherent risk whilst taking part in the event;
- b. They are responsible for the safety of themselves, their crew, their boat and their other property whether afloat or ashore;
- c. They accept responsibility for any injury, damage or loss to the extent caused by their own actions or omissions;
- d. Their boat is in good order, equipped to sail in the event and they are fit to participate;
- e. The provision of a race management team, patrol boats and other officials and volunteers by the event organizer does not relieve them of their own responsibilities;
- f. The provision of patrol boat cover is limited to such assistance, particularly in extreme weather conditions, as can be practically provided in the circumstances; and
- g. It is their responsibility to familiarise themselves with any risks specific to this venue or this event drawn to their attention in any rules and information produced for the venue or event and to attend any safety briefing held for the event.

21. INSURANCE.

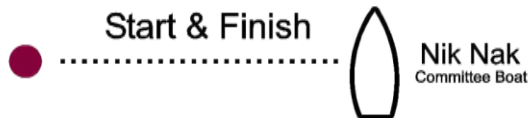
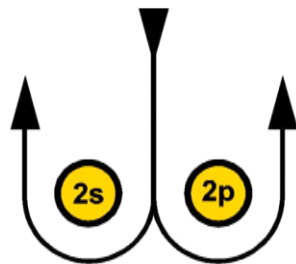
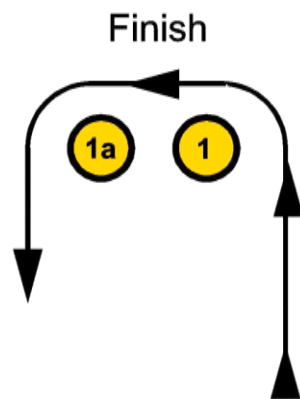
21.1. Each participating boat shall be insured with valid third-party liability insurance with a minimum cover of £3,000,000 per incident or the equivalent.

22. LEAD BOAT.

22.1. For the final round-the-cans race, as an aid to visiting yachts, a RIB flying code flag "L" will lead the fleet towards each mark of the course. However, safe navigation will remain the responsibility of each skipper.

ANNEX.A.

COURSE: WINDWARD / LEEWARD With Spreader Mark	
Signal	Mark Rounding Order
LA1	Start - 1- 1a - 2s/2p - 1 - 1a - Finish
LA2	Start - 1- 1a - 2s/2p - 1 - 1a - 2s/2p - 1 - 1a - Finish
LA3	Start - 1- 1a - 2s/2p - 1 - 1a - 2s/2p - 1 - 1a - 2s / 2p - 1 - 1a - Finish



www.edyc.co.uk



